

44-1146: Anti-EZH2 Monoclonal Antibody (Clone:IHC570)-Ready to Use(Discontinued)

Clonality :	Monoclonal
Clone Name :	IHC570
Application :	IHC
Reactivity :	Human
Gene :	EZH2
Gene ID :	2146
Uniprot ID :	Q15910
Format :	Predilute
Alternative Name :	KMT6, ENX-1, Enhancer of zeste homolog 21, Lysine N-methyltransferase 6, Histone-lysine N-methyltransferase EZH2

Description

Enhancer of Zeste Homolog 2 (EZH2) is a methylase of histone H3 that silences gene expression in those regions. EZH2 is overexpressed or mutated in gastric, prostate, uterine, breast, and renal cell cancers, as well as in melanoma and most B- and T-lymphocyte lymphomas. Although EZH2 is usually present in follicular centers, it is not expressed in the mantle zones, plasma cells, follicular or interfollicular T-lymphocytes, natural killer T-lymphocytes, plasmacytoma, lymphoplasmacytic lymphoma, or MALT lymphoma. EZH2 is rarely present in normal breast duct epithelium and in normal and hyperplastic lymph node. Anti-EZH2 is also useful for detecting lymphoma and non-small cell lung cancers. EZH2 is associated with tumor proliferation and can be used in staining panels to distinguish aggressive lymphomas from less aggressive lymphomas or normal cells.

Product Info

Amount :	7 ml
Purification :	Protein A/G Chromatography
Storage condition :	Store at 2°C - 8°C.

Application Note

This product is available in ready to use format, hence no dilution is required.

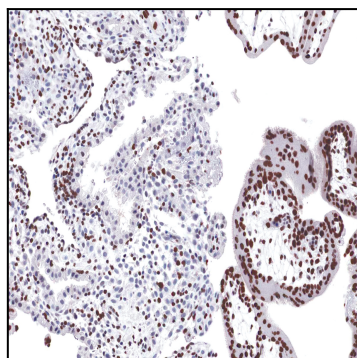


Figure 1: Immunohistochemical analysis of EZH2 (IHC570) on Placenta