

## 44-1139: Anti-DOG1 Monoclonal Antibody (Clone:IHC562)(Discontinued)

<b>Clonality :</b>	Monoclonal
<b>Clone Name :</b>	IHC562
<b>Application :</b>	IHC
<b>Reactivity :</b>	Human
<b>Gene :</b>	ANO1
<b>Gene ID :</b>	55107
<b>Uniprot ID :</b>	Q5XXA6
<b>Format :</b>	Purified
<b>Alternative Name :</b>	Anoctamin 1, Calcium Activated Chloride Channel, Discovered On Gastrointestinal Stromal Tumors Protein 1, TAOS2, ORAOV2, TMEM16A

### Description

DOG1, also known as Discovered on GIST-1, is a marker that highly specific for gastrointestinal stromal tumor (GIST). Anti-DOG1 is extremely sensitive for the detection of GIST and its diagnosis. Although some GIST stain weakly for c-kit, DOG1 is expressed in the vast majority of GIST cases. Reports have also indicated DOG1 as a marker for salivary acinar and intercalated duct differentiation.

### Product Info

<b>Amount :</b>	0.1 ml / 1 ml
<b>Purification :</b>	Protein A/G Chromatography
<b>Storage condition :</b>	Store at 2°C - 8°C.

### Application Note

Recommended dilutions: Immunohistochemical analysis: 1:100 - 1:200. However, this need to be optimized based on the research applications.

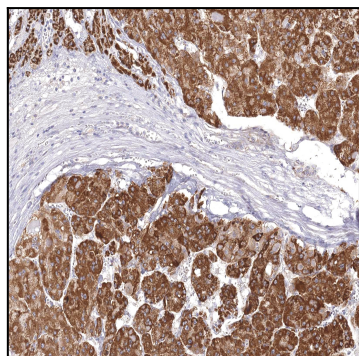


Figure 1: Immunohistochemical analysis of DOG1 (IHC562) on Liver Cancer