

## 44-1136: Anti-CEA Monoclonal Antibody (Clone:IHC543)-Ready to Use

<b>Clonality :</b>	Monoclonal
<b>Clone Name :</b>	IHC543
<b>Application :</b>	IHC
<b>Reactivity :</b>	Human
<b>Gene :</b>	CEACAM5
<b>Gene ID :</b>	1048
<b>Uniprot ID :</b>	P06731
<b>Format :</b>	Predilute
<b>Alternative Name :</b>	Carcinoembryonic antigen, Meconium antigen 100, CD66e

### Description

Carcinoembryonic antigen (CEA) describes a set of glycoposphatidyl inositol and transmembrane cell-surface-anchored glycoproteins involved in cell adhesion, differentiation, anoikis, polarization, and tissue architecture. CEA staining, along with Calretinin, CK 5/6, D2-40, HBME-1, Napsin A, MOC-31, and Ber-EP4, is used to help differentiate between adenocarcinoma and mesothelioma. Staining with Anti-CEA is also suggested to be useful in identifying the origin of metastatic adenocarcinoma. CEA is an effective marker for adenocarcinomas of the lung, colon, stomach, esophagus, pancreas, gallbladder, urachus, salivary gland, ovary, and endocervix.

### Product Info

<b>Amount :</b>	7 ml
<b>Purification :</b>	Protein A/G Chromatography
<b>Storage condition :</b>	Store at 2°C - 8°C.

### Application Note

This product is available in ready to use format, hence no dilution is required.

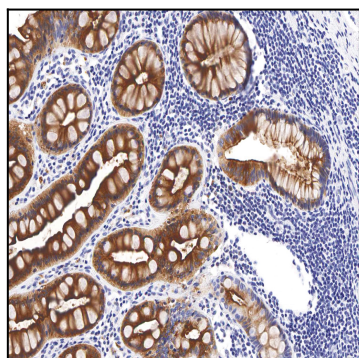


Figure 1: Immunohistochemical analysis of CEA (IHC543) on Rectum