

44-1129: Anti-CD15/Leu-M1 Monoclonal Antibody (Clone:IHC527)

Clonality :	Monoclonal
Clone Name :	IHC527
Application :	IHC
Reactivity :	Human
Gene :	FUT4
Gene ID :	2526
Uniprot ID :	P22083
Format :	Purified
Alternative Name :	FUT4, ELFT, FCT3A, Alpha-(1,3)-fucosyltransferase 4, ELAM-1 ligand fucosyltransferase, Fucosyltransferase 4, Fucosyltransferase I, Fuc-TIV, FucT-IV, Galactoside 3-L-fucosyltransferase

Description

Cluster of differentiation 15 (CD15) is a carbohydrate adhesion molecule. Positive staining for CD15 and negative staining for leukocyte common antigen or other B- or T-cell lineage markers helps recognize Reed Sternberg cells (RSC) in Classical Hodgkin's Lymphoma (CHL), and distinguishes it from Hodgkin-like neoplasms. CD15 does not stain mesotheliomas and is therefore most useful for distinguishing epithelial mesothelioma from adenocarcinoma.

Product Info

Amount :	0.1 ml / 1 ml
Purification :	Protein A/G Chromatography
Storage condition :	Store at 2°C - 8°C.

Application Note

Recommended dilutions: Immunohistochemical analysis: 1:100 - 1:200. However, this need to be optimized based on the research applications.

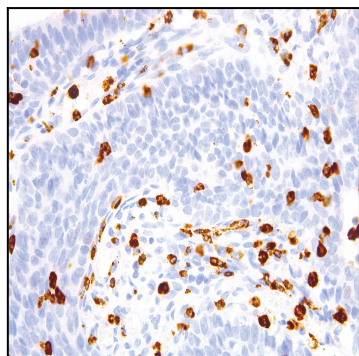


Figure 1: Immunohistochemical analysis of CD15/Leu-M1 (IHC527) on Cervical Cancer