

44-1128: Anti-BG8 LewisY Monoclonal Antibody (Clone:IHC517)-Ready to Use

Clonality : Monoclonal

Clone Name : IHC517

Application : IHC

Reactivity : Human

Format : Predilute

Description

BG8 LewisY, also known as LewisY blood antigen or simply BG8, is a blood group antigen that has been identified in many studies as a potential marker for differentiation between pulmonary adenocarcinoma (PACA) and epithelioid mesothelioma (EM). It has been reported that sensitivity of non-mesothelial antigens for adenocarcinoma is organ-dependent. When attempting to differentiate epithelioid mesothelioma from adenocarcinoma, BG8 LewisY performed at a sensitivity of 98% in the breast cancer group, and 100% in the lung cancer group.

Product Info

Amount : 7 ml

Purification : Protein A/G Chromatography

Storage condition : Store at 2°C - 8°C.

Application Note

This product is available in ready to use format, hence no dilution is required.

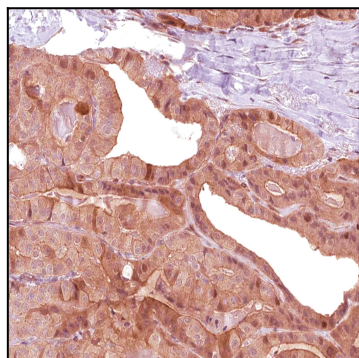


Figure 1: Immunohistochemical analysis of BG8, Lewisy (IHC517) on Thyroid Cancer