

44-1127: Anti-BG8 LewisY Monoclonal Antibody (Clone:IHC517)

Clonality : Monoclonal

Clone Name : IHC517

Application : IHC

Reactivity : Human

Format : Purified

Description

BG8 LewisY, also known as LewisY blood antigen or simply BG8, is a blood group antigen that has been identified in many studies as a potential marker for differentiation between pulmonary adenocarcinoma (PACA) and epithelioid mesothelioma (EM). It has been reported that sensitivity of non-mesothelial antigens for adenocarcinoma is organ-dependent. When attempting to differentiate epithelioid mesothelioma from adenocarcinoma, BG8 LewisY performed at a sensitivity of 98% in the breast cancer group, and 100% in the lung cancer group.

Product Info

Amount : 0.1 ml / 1 ml

Purification : Protein A/G Chromatography

Storage condition : Store at 2°C - 8°C.

Application Note

Recommended dilutions: Immunohistochemical analysis: 1:100 - 1:200. However, this need to be optimized based on the research applications.

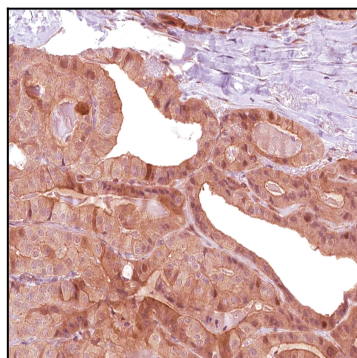


Figure 1: Immunohistochemical analysis of BG8, LewisY (IHC517) on Thyroid Cancer