

44-1121: Anti-GLUT1 Monoclonal Antibody (Clone:IHC404)

Clonality :	Monoclonal
Clone Name :	IHC404
Application :	IHC
Reactivity :	Human
Gene :	SLC2A1
Gene ID :	6513
Uniprot ID :	P11166
Format :	Purified
Alternative Name :	SLC2A1, GLUT1, Solute carrier family 2, facilitated glucose transporter member 1, Glucose transporter type 1, erythrocyte/brain, HepG2 glucose transporter

Description

Glucose transporter type I (GLUT1), also known as SCL2A1, is a glucose transporter present in the blood-brain barrier as well as erythrocytes. GLUT1 overexpression is associated with tumor progression or poor prognoses of bladder, breast, cervical, colon, and lung carcinomas, as well as mesothelioma. Anti-GLUT1 is useful for distinguishing malignant mesothelioma (GLUT1(+)) from reactive mesothelium (GLUT1(-)).

Product Info

Amount :	0.1 ml / 1 ml
Purification :	Protein A/G Chromatography
Storage condition :	Store at 2°C - 8°C.

Application Note

Recommended dilutions: Immunohistochemical analysis: 1:100 - 1:200. However, this need to be optimized based on the research applications.

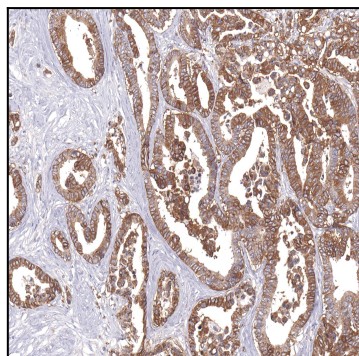


Figure 1: Immunohistochemical analysis of GLUT1 (IHC404) on Colon Cancer