

## 44-1119: Anti-Estrogen Receptor Monoclonal Antibody (Clone:IHC403)(Discontinued)

<b>Clonality :</b>	Monoclonal
<b>Clone Name :</b>	IHC403
<b>Application :</b>	IHC
<b>Reactivity :</b>	Human
<b>Gene :</b>	ESR1
<b>Gene ID :</b>	2099
<b>Uniprot ID :</b>	P03372
<b>Format :</b>	Purified
<b>Alternative Name :</b>	ESR, NR3A1, ESR1, ER-alpha, Estradiol receptor, Nuclear receptor subfamily 3 group A member 1

### Description

Estrogen receptors (ER) are a group of nuclear hormone receptors activated by the hormone estrogen. ER is found in normal epithelial cells of the breast and endometrium, as well as in breast cancer cells.

### Product Info

<b>Amount :</b>	0.1 ml / 1 ml
<b>Purification :</b>	Protein A/G Chromatography
<b>Storage condition :</b>	Store at 2°C - 8°C.

### Application Note

Recommended dilutions: Immunohistochemical analysis: 1:100 - 1:200. However, this need to be optimized based on the research applications.

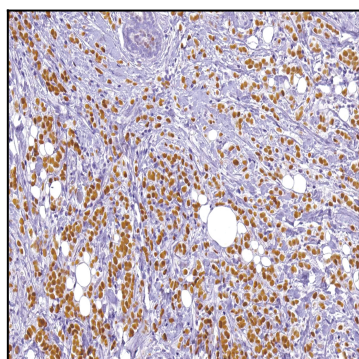


Figure 1: Immunohistochemical analysis of Estrogen Receptor (IHC403) on Breast Cancer