

44-1113: Anti-s-100 Monoclonal Antibody (Clone:IHC100)

Clonality :	Monoclonal
Clone Name :	IHC100
Application :	IHC
Reactivity :	Human
Gene :	S100A1
Gene ID :	6271
Uniprot ID :	P23297
Format :	Purified
Alternative Name :	S100A, Protein S100-A1, S-100 protein alpha chain, S-100 protein subunit alpha, S100 calcium-binding protein A1

Description

S-100 is a low-molecular weight protein that is found in Schwann cells, melanocytes, glial cells, histiocytes, lipocytes, skeletal and cardiac muscle, chondrocytes, adipocytes, myoepithelial cells, macrophages, Langerhans cells, dendritic cells, and keratinocytes. S-100 is a useful marker for Schwann cell-derived tumors, as well as a number of well-differentiated tumors of the salivary gland, adipose and cartilaginous tissue. Anti-S-100 is used to detect melanomas, histiocytosis X, malignant peripheral nerve sheath tumors, and clear cell sarcomas.

Product Info

Amount :	0.1 ml / 1 ml
Purification :	Protein A/G Chromatography
Storage condition :	Store at 2°C - 8°C.

Application Note

Recommended dilutions: Immunohistochemical analysis: 1:100 - 1:200. However, this need to be optimized based on the research applications.

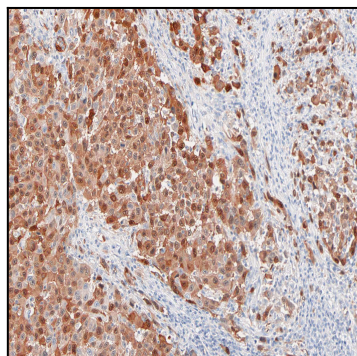


Figure 1: Immunohistochemical analysis of S-100 (IHC100) on Melanoma