

## 44-1093: Anti-Actin, Smooth Muscle Monoclonal Antibody (Clone:IHC506)

<b>Clonality :</b>	Monoclonal
<b>Clone Name :</b>	IHC506
<b>Application :</b>	IHC
<b>Reactivity :</b>	Human
<b>Gene :</b>	ACTA2
<b>Gene ID :</b>	59
<b>Uniprot ID :</b>	P62736
<b>Format :</b>	Purified
<b>Alternative Name :</b>	ACTA2, ACTSA, ACTVS, GIG46, Alpha-actin-2, Cell growth-inhibiting gene 46 protein

### Description

Actin is part of the cytoskeletal system of all cell types. Smooth Muscle Actin is found in myofibroblasts and myoepithelium, but not in cardiac and skeletal muscles. Labelling of smooth muscle actin in concert with muscle specific actin staining can allow for differentiation between rhabdomyosarcoma and leiomyosarcoma, as Muscle specific actin is found in rhabdomyoblasts, while smooth muscle actin is found in leiomyosarcomas.

### Product Info

<b>Amount :</b>	0.1 ml / 1 ml
<b>Purification :</b>	Protein A/G Chromatography
<b>Storage condition :</b>	Store at 2°C - 8°C.

### Application Note

Recommended dilutions: Immunohistochemical analysis: 1:100 - 1:200. However, this need to be optimized based on the research applications.

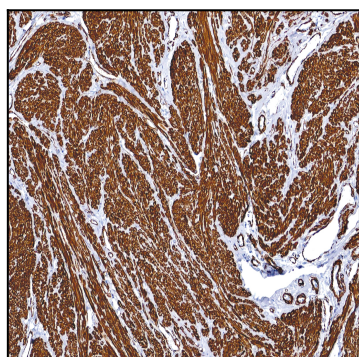


Figure 1: Immunohistochemical analysis of Actin, Smooth Muscle (IHC506) on Small Intestine