

## 90-4001: Porcine GAL3 (Galectin 3) Pre-Coated ELISA Kit

**Application :** ELISA

**Reactivity :** Human

### Description

This kit was based on sandwich enzyme-linked immune-sorbent assay technology. Anti- GAL3 antibody was pre-coated onto 96-well plates. And the biotin conjugated anti-GAL3 antibody was used as detection antibodies. The standards, test samples and biotin conjugated detection antibody were added to the wells subsequently, and wash with wash buffer. HRP-Streptavidin was added and unbound conjugates were washed away with wash buffer. TMB substrates were used to visualize HRP enzymatic reaction. TMB was catalyzed by HRP to produce a blue color product that changed into yellow after adding acidic stop solution. The density of yellow is proportional to the GAL3 amount of sample captured in plate. Read the O.D. absorbance at 450nm in a microplate reader, and then the concentration of GAL3 can be calculated.

### Kit Components

Item	Specifications	Storage
96 well Strip ELISA Plate	8 X 12 well	4°C/-20°C
Lyophilized Standard	2 vials	4°C/-20°C
Sample and Standard Dilution Buffer	20 ml	4°C
Biotinylated Detection Antibody for CIL-12/p70	120 µl	4°C/-20°C
Antibody Dilution Buffer	10 ml	4°C
HRP Conjugated Streptavidin (SABC)	120 µl	4°C in dark
SABC Dilution Buffer	10 ml	4°C
TMB Substrate	10 ml	4°C in dark
Stop Solution	10 ml	4°C
25X Wash Buffer	30 ml	4°C
Plate Sealer	5 pieces	
Product Manual	1	

### Product Info

**Amount :** 1 Kit— 96 Tests

**Content :** 1 Kit— 96 well Format (96 tests)

**Storage condition :** Please refer to the Manual

### Application Note

This immunoassay kit allows for the in vitro quantitative determination of Porcine Gal 3 (Galectin 3) concentrations in serum,

plasma and other biological fluids.

**Detection Range:** 0.156-10 ng/ml

**Sensitivity:** <0.094 ng/ml

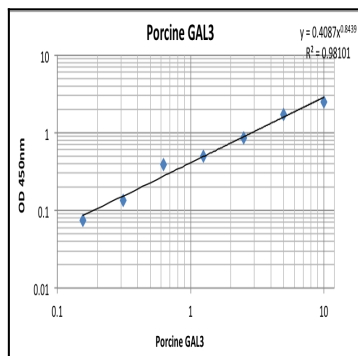


Figure-1: Porcine GAL3 Standard Curve