

10-1067: Monoclonal antibody to RLIP (Clone: ABM6D5.1E4)

Clonality :	Monoclonal
Clone Name :	ABM6D5.1E4
Application :	WB
Reactivity :	Human
Gene :	RALBP1
Gene ID :	10928
Uniprot ID :	Q15311
Format :	Purified
Alternative Name :	RalA-binding protein 1, 76 kDa Ral-interacting protein, Dinitrophenyl S-glutathione ATPase, Ral-interacting protein 1, RLIP1, RLIP76
Isotype :	Mouse IgG2 Kappa

Product Info

Amount :	25 µg / 100 µg
Purification :	Protein G Chromatography
Content :	25 µg in 50 µl/100 µg in 200 µl PBS containing 0.05% BSA and 0.05% sodium azide. Sodium azide is highly toxic.
Storage condition :	Store the antibody at 4°C, stable for 6 months. For long-term storage, store at -20°C. Avoid repeated freeze and thaw cycles.

Application Note

Recommended dilutions: WB: 0.1-0.5 µg/ml. However, this need to be optimized based on the research applications.

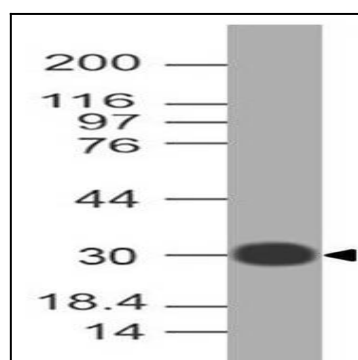


Figure-1: Western blot analysis of RLIP. Anti-RLIP antibody (Clone: ABM6D5.1E4) was used at 0.1 µg/ml on Recombinant protein.