

10-1066: Monoclonal antibody to RLIP (Clone: ABM3G10.1E9)

| | |
|---------------------------|--|
| Clonality : | Monoclonal |
| Clone Name : | ABM3G10.1E9 |
| Application : | WB |
| Reactivity : | Human |
| Gene : | RALBP1 |
| Gene ID : | 10928 |
| Uniprot ID : | Q15311 |
| Format : | Purified |
| Alternative Name : | RalA-binding protein 1, 76 kDa Ral-interacting protein, Dinitrophenyl S-glutathione ATPase, Ral-interacting protein 1, RLIP1, RLIP76 |
| Isotype : | Mouse IgG2 Kappa |

Product Info

| | |
|----------------------------|---|
| Amount : | 25 µg / 100 µg |
| Purification : | Protein G Chromatography |
| Content : | 25 µg in 50 µl/100 µg in 200 µl PBS containing 0.05% BSA and 0.05% sodium azide. Sodium azide is highly toxic. |
| Storage condition : | Store the antibody at 4°C, stable for 6 months. For long-term storage, store at -20°C. Avoid repeated freeze and thaw cycles. |

Application Note

Recommended dilutions: WB: 0.05-0.1 µg/ml. However, this need to be optimized based on the research applications.

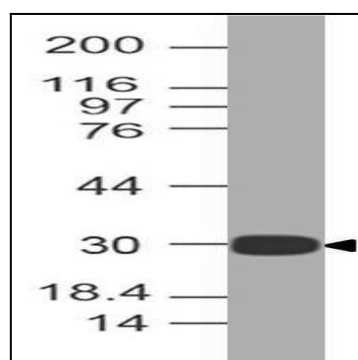


Figure-1: Western blot analysis of RLIP. Anti-RLIP antibody (Clone: ABM3G10.1E9) was used at 0.05 µg/ml on Recombinant protein.