

36-1583: Monoclonal Antibody to Prolactin Receptor (hPRL-Receptor)(Clone : B6.2)

| | |
|--------------------------------|--|
| Clonality : | Monoclonal |
| Clone Name : | B6.2 |
| Application : | FACS,IF,IHC |
| Reactivity : | Human |
| Gene : | PRLR |
| Gene ID : | 5618 |
| Uniprot ID : | P16471 |
| Format : | Purified |
| Alternative Name : | PRLR |
| Isotype : | Mouse IgG1, kappa |
| Immunogen Information : | Semi-purified human prolactin receptor |

Description

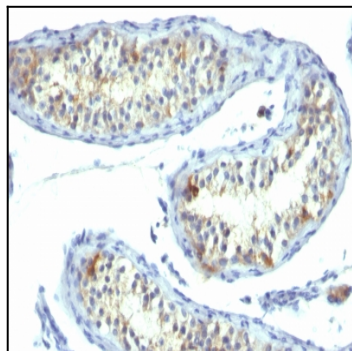
It recognizes a protein of 70kDa, identified as prolactin receptor. Prolactin is a pituitary hormone involved in the stimulation of milk production, salt and water regulation, growth, development and reproduction. The initial step in its action is the binding to a specific membrane receptor (prolactin receptor), which belongs to the superfamily of class 1 cytokine receptors. The function of the prolactin receptor is mediated, at least in part, by two families of signaling molecules: Janus kinases and signal transducers and activators of transcription.

Product Info

| | |
|----------------------------|---|
| Amount : | 100 µg |
| Purification : | Affinity Chromatography |
| Content : | 100 µg in 500 µl PBS containing 0.05% BSA and 0.05% sodium azide. Sodium azide is highly toxic. |
| Storage condition : | Store the antibody at 4°C; stable for 6 months. For long-term storage; store at -20°C. Avoid repeated freeze and thaw cycles. |

Application Note

Flow Cytometry (1-2ug/million cells); Immunofluorescence (1-2ug/ml); ,Immunohistochemistry (Formalin-fixed) (1-2ug/ml for 30 minutes at RT),(Staining of formalin-fixed tissues requires heating tissue sections in 10mM Tris with 1mM EDTA, pH 9.0, for 45 min at 95°C followed by cooling at RT for 20 minutes);



Formalin-fixed, paraffin-embedded human Testicular Carcinoma stained with Prolactin Receptor Monoclonal Antibody (B6.2).