

11-4078: Polyclonal antibody to CD3 Zeta/CD247

Clonality :	Polyclonal
Application :	IP,ELISA,WB
Reactivity :	Human
Gene :	CD247
Gene ID :	919
Uniprot ID :	P20963
Format :	Purified
Alternative Name :	CD3-ZETA, CD3H, CD3Q, CD3Z, IMD25, T3Z, TCRZ , T-cell receptor T3 zeta chain, CD247, CD3 zeta
Isotype :	Rabbit IgG
Immunogen Information :	Recombinant Human CD247 / CD3-ZETA Protein

Description

CD247, also known as CD3-ZETA, belongs to the CD3Z/FCER1G family. It contains 3 ITAM domains. As a -cell receptor zeta, CD247 forms the T-cell receptor-CD3 complex together with T-cell receptor alpha/beta and gamma/delta heterodimers, and with CD3-gamma, -delta and -epsilon. The zeta chain plays an important role in coupling antigen recognition to several intracellular signal-transduction pathways. Low expression of the antigen results in impaired immune response. Two alternatively spliced transcript variants encoding distinct isoforms have been found for CD247 gene. Defects in CD247 can cause immunodeficiency due to defect in CD3-zeta. An immunological deficiency characterized by T-cells impaired immune response to alloantigens, tetanus toxoid and mitogens. CD247 may play a role in assembly and expression of the TCR complex as well as signal transduction upon antigen triggering.

Product Info

Amount :	25 µg / 100 µg
Purification :	Protein A & Antigen Affinity
Content :	0.2 µg/ml filtered solution in PBS
Storage condition :	This antibody can be stored at 2-8°C for one month without detectable loss of activity. Antibody products are stable for twelve months from date of receipt when stored at -20°C to -80°C. Preservative-Free. Avoid repeated freeze-thaw cycles.

Application Note

WB:1:500-1:2000, ELISA:1:5000-1:10000, IP:0.5-2 µL/mg of lysate

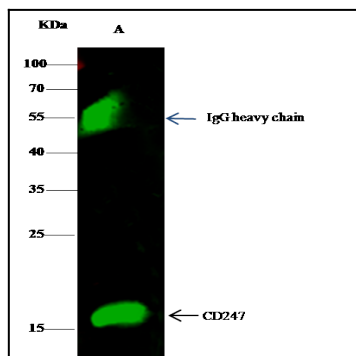


Figure-1: Immunoprecipitation of CD3 zeta using lane A: 0.5 mg Jurkat Whole Cell Lysate. 2 μ L anti-CD247 rabbit polyclonal antibody and 15 μ L of 50 % Protein G agarose. Primary antibody: Anti-CD3 zeta rabbit polyclonal antibody at 1:200 dilution.

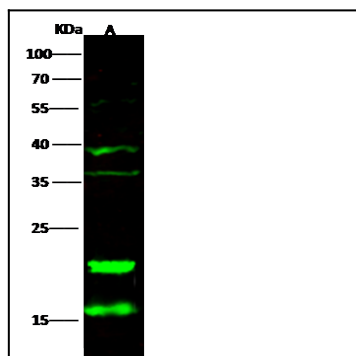


Figure-2: Western blot analysis of CD3 zeta. Anti-CD3 zeta antibody (11-4078) was used at 1:500 dilution on lane A: Jurkat Whole Cell Lysate. Lysates/proteins at 30 μ g per lane.