

10-8023: Monoclonal antibody to BIN1 (Clone: ABM57E4)

Clonality :	Monoclonal
Clone Name :	ABM57E4
Application :	WB
Reactivity :	Human
Gene :	BIN1
Gene ID :	274
Uniprot ID :	O00499
Format :	Purified
Alternative Name :	Amphiphysin II, Amphiphysin-like protein, Box-dependent myc-interacting protein 1, Bridging integrator 1, AMPHL
Isotype :	Mouse IgG2b, Kappa
Immunogen Information :	A partial length recombinant protein of BIN1 (amino acid 175-400) was used as the immunogen for this antibody.

Product Info

Amount :	25 µg / 100 µg
Purification :	Protein G Chromatography
Content :	25 µg in 50 µl/100 µg in 200 µl PBS containing 0.05% BSA and 0.05% sodium azide. Sodium azide is highly toxic.
Storage condition :	Store the antibody at 4°C, stable for 6 months. For long-term storage, store at -20°C. Avoid repeated freeze and thaw cycles.

Application Note

Recommended dilutions: WB: 1-2 µg/ml. However, this need to be optimized based on the research applications.

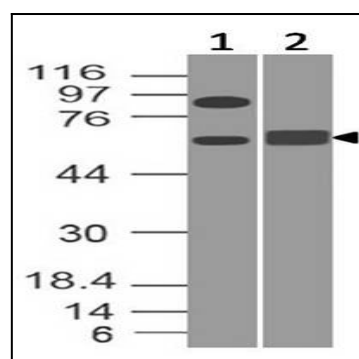


Figure-1: Western blot analysis of BIN1. Anti-BIN1 antibody (Clone: ABM57E4) was used at 1 µg/ml on (1) h Brain and (2) h SKM lysates.