

42-1470: Anti-HSP47 Monoclonal Antibody (Clone : 1C4-1A6)

Clonality :	Monoclonal
Clone Name :	1C4-1A6
Application :	WB,ICC/IF
Reactivity :	Human
Conjugate :	Unconjugated
Gene :	SERPINH1
Gene ID :	871
Uniprot ID :	P50454
Alternative Name :	SERPINH1,CBP1,CBP2,HSP47,SERPINH2,PIG14
Isotype :	Mouse IgG1 Kappa
Immunogen Information :	Human HSP47, full length

Description

HSP47 is a chaperone protein, member of the superfamily of serine proteinase inhibitors. Also known as SERPINH1, a serine proteinase inhibitor. It is a stress protein that resides in the endoplasmic reticulum, has an active role on the intracellular process of folding, assembly and secretion of pro-collagens. Recent studies have shown the association of an increased expression of HSP47 around fibrotic lesions. The identification of a novel biomarker on cell therapies aimed to reduce the progression of fibrotic diseases, could be used potentially as a universal marker, since HSP47 binds a single substrate. Type I collagen is fundamental during the healing process after a myocardial infarction. It is critical in the position of collagen-produced cells and the assembly of collagen fibrils.

Product Info

Amount :	200 µg
Purification :	Protein G Purified
Content :	PBS pH7.4, 50% glycerol, 0.09% sodium azide
Storage condition :	Store the antibody at 4°C; stable for 6 months. For long-term storage; store at -20°C. Avoid repeated freeze and thaw cycles.

Application Note

WB (1:1000), ICC/IF (1:100); optimal dilutions for assays should be determined by the user.

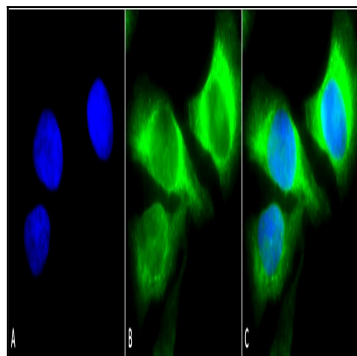


Figure1 : Mouse Anti-Hsp47 Antibody [1C4-1A6] used in Immunocytochemistry/Immunofluorescence (ICC/IF) on Human Heat Shocked HeLa Cells

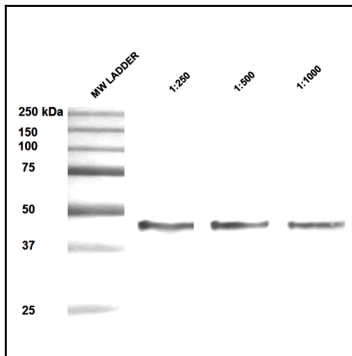


Figure 2 : Mouse Anti-Hsp47 Antibody [1C4-1A6] used in Western Blot (WB) on Human Epithelial cell (A431) lysates

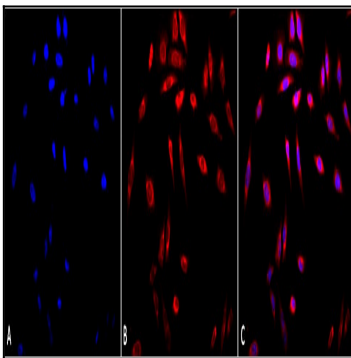


Figure 3 : Mouse Anti-Hsp47 Antibody [1C4-1A6] used in Immunocytochemistry/Immunofluorescence (ICC/IF) on Human Heat Shocked HeLa Cells