

42-1332: Anti-HSP40, YDJ1 Monoclonal Antibody (Clone : 1G10.H8) - ATTO 680(Discontinued)

Clonality :	Monoclonal
Clone Name :	1G10.H8
Application :	WB,IP,ELISA
Reactivity :	Yeast
Conjugate :	ATTO 680
Gene :	YDJ1
Gene ID :	855661
Uniprot ID :	P25491
Alternative Name :	YDJ1,MAS5,YNL064C,N2418,YNL2418C
Isotype :	Mouse IgG1 Kappa
Immunogen Information :	Full length protein yeast HSP40 (YDJ1)

Description

Human HSP40/DnaJ proteins comprise a large protein family, members of which feature the J domain (named after the bacterial DnaJ protein). The J-domain spans the first 75 N-terminal amino acids and is separated from the C-terminal by a glycine/phenylalanine-rich domain. There are two main types of HSP40; type I DNAJ proteins including HDJ2 and yeast Ydj1; type II includes yeast Sis1 and human Hdj1. Whereas type I possesses a zinc finger domain which helps in the function of protein folding, type II does not. Members of the HSP40/DnaJ family play diverse roles in many cellular processes, such as folding, translocation, degradation and assembly of multi-protein complexes. HSP40 stimulates the ATPase activity of HSP70 which in turn causes conformational changes of the unfolded proteins. The HSP40-HSP70-unfolded protein complex further binds to co-chaperones Hip, Hop and HSP90 which leads to protein folding, or components of protein degradation machinery CHIP and BAG-1.

Product Info

Amount :	100 µg
Purification :	Protein G Purified
Content :	50% glycerol, 0.09% sodium azide
Storage condition :	Store the antibody at 4°C

Application Note

WB (1:2000); optimal dilutions for assays should be determined by the user.

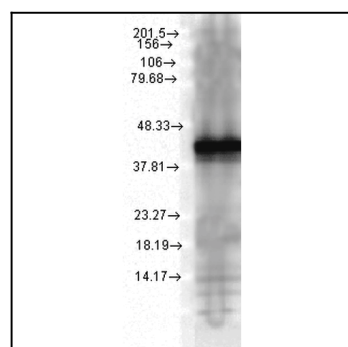


Figure1 : Mouse Anti-Hsp40 Antibody [1G10.H8] used in Western Blot (WB) on Yeast Cell lysates