

30-2474: PE/DyLight Conjugated Mouse IgG1 Isotype Control Monoclonal Antibody (Clone:MOPC-21)

Clonality : Monoclonal
Clone Name : MOPC-21
Application : FACS
Isotype : Mouse IgG1

Description

The specificity of staining by monoclonal antibodies to target antigens should be verified by establishing the amount of non-specific antibody binding. Especially at higher concentration (more than 15 $\mu\text{g/ml}$) the antibody staining usually has considerable background. To this end a non-reactive immunoglobulin of the same isotype is included as a negative control for each specific monoclonal antibody used in a particular immunoassay. The monoclonal antibody MOPC-21, generated against an undefined antigen, does not react specifically with rat and human samples, and hence all the background that could be observed when working with this antibody would be a result of general nonspecific interactions between a mouse IgG1 molecule and the respective sample under the particular conditions. This shall help the customer to set up the experimental conditions so that the nonspecific binding of any antibody is abolished.

Product Info

Amount : 0.1 mg
Storage condition : Store in the dark at 2-8°C. Do not freeze. Avoid prolonged exposure to light.

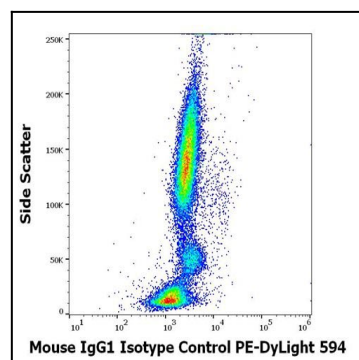


Figure 1: Flow cytometry surface nonspecific staining pattern of human peripheral whole blood stained using mouse IgG1 Isotype control (MOPC-21) PE-DyLight® 594 antibody (concentration in sample 15 $\mu\text{g/ml}$).