

## 30-2123: PE Conjugated Anti-TCR gamma/delta Monoclonal Antibody (Clone:B1)

<b>Clonality :</b>	Monoclonal
<b>Clone Name :</b>	B1
<b>Application :</b>	FACS
<b>Reactivity :</b>	Human
<b>Conjugate :</b>	PE
<b>Gene :</b>	PLCG1
<b>Gene ID :</b>	5335
<b>Uniprot ID :</b>	P19174
<b>Alternative Name :</b>	PLCG1,PLC1
<b>Isotype :</b>	Mouse IgG1

### Description

The antigen-specific T cell receptor (TCR) is composed of either alpha and beta subunit, or gamma and delta subunit. Majority of T cells present in the blood, lymph and secondary lymphoid organs express TCR alpha/beta heterodimers, whereas the T cells expressing TCR gamma/delta heterodimers are localized mainly in epithelial tissues and at the sites of infection. The subunits of TCR heterodimers are covalently bonded and in the endoplasmic reticulum they associate with CD3 subunits to form functional TCR-CD3 complex. Lack of expression of any of the chains is sufficient to stop cell surface expression.

### Product Info

<b>Amount :</b>	100 tests
<b>Storage condition :</b>	Store in the dark at 2-8°C. Do not freeze. Avoid prolonged exposure to light.

### Application Note

Flow cytometry: The reagent is designed for analysis of human blood cells using 10 µl reagent / 100 µl of whole blood or 10<sup>6</sup> cells in a suspension. The content of a vial (1 ml) is sufficient for 100 tests.

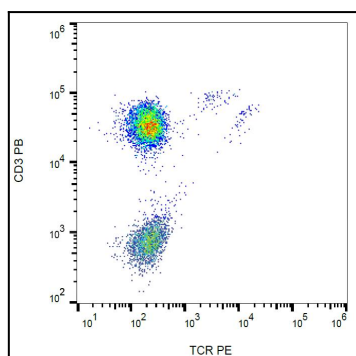


Figure 1: Surface staining of human peripheral blood lymphocytes with anti-human TCR gamma/delta (B1) PE.

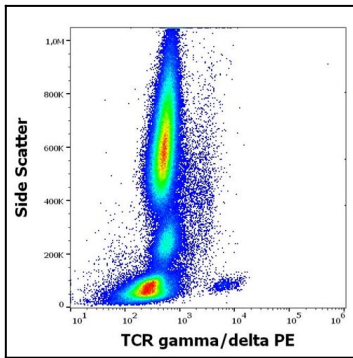


Figure 2: Flow cytometry surface staining pattern of human peripheral whole blood stained using anti-human TCR gamma/delta (B1) PE antibody