

## 30-1255: Anti-TCR beta (Vbeta5.3-related) Monoclonal Antibody (Clone:MEM-262)

<b>Clonality :</b>	Monoclonal
<b>Clone Name :</b>	MEM-262
<b>Application :</b>	FACS
<b>Reactivity :</b>	Human
<b>Format :</b>	Purified
<b>Isotype :</b>	Mouse IgG2a
<b>Immunogen Information :</b>	Human thymoma cell line HPB-ALL.

### Product Info

<b>Amount :</b>	0.1 mg
<b>Purification :</b>	Purified by protein-A affinity chromatography
<b>Storage condition :</b>	Store at 2-8°C. Do not freeze.

### Application Note

**Flow Cytometry Immunoprecipitation Western Blotting** Uniquely recognizes denatured TCR beta chains under the conditions of Western blotting. **Functional Application** Activates T cells (V beta 5-related subset)

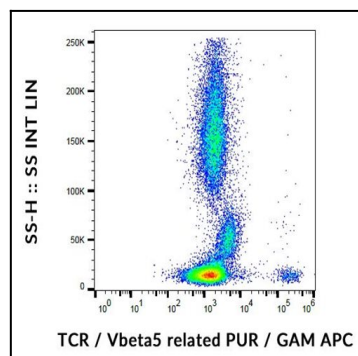


Figure 1: Flow cytometry analysis (surface staining) of human peripheral blood cells with anti-human TCR Vbeta5.3 related (MEM-262) purified, GAM/APC