

30-1899: Biotin Conjugated Anti-TCR alpha/beta Monoclonal Antibody (Clone:IP26)

Clonality :	Monoclonal
Clone Name :	IP26
Application :	FACS
Reactivity :	Human
Conjugate :	Biotin
Gene :	PTCRA
Gene ID :	171558
Uniprot ID :	Q6ISU1
Alternative Name :	PTCRA
Isotype :	Mouse IgG1

Description

The antigen-specific T cell receptor (TCR) is composed of either alpha and beta subunit, or gamma and delta subunit. Majority of T cells present in the blood, lymph and secondary lymphoid organs express TCR alpha/beta heterodimers, whereas the T cells expressing TCR gamma/delta heterodimers are localized mainly in epithelial tissues and at the sites of infection. The subunits of TCR heterodimers are covalently bonded and in the endoplasmic reticulum they associate with CD3 subunits to form functional TCR-CD3 complex. Lack of expression of any of the chains is sufficient to stop cell surface expression.

Product Info

Amount :	0.1 mg
Storage condition :	Store at 2-8°C. Do not freeze.

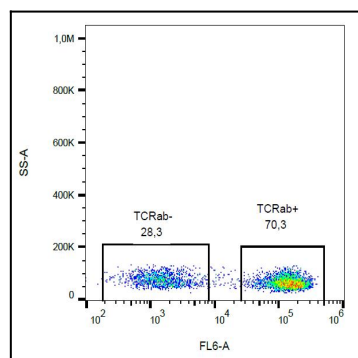


Figure 1: Surface staining of human peripheral blood with anti-TCR alpha/beta (IP26) biotin.