

### 30-1349: Anti-STIM1 / GOK Monoclonal Antibody (Clone:CDN3H4)

<b>Clonality :</b>	Monoclonal
<b>Clone Name :</b>	CDN3H4
<b>Application :</b>	IP
<b>Reactivity :</b>	Human
<b>Gene :</b>	STIM1
<b>Gene ID :</b>	6786
<b>Uniprot ID :</b>	Q13586
<b>Format :</b>	Purified
<b>Alternative Name :</b>	STIM1,GOK
<b>Isotype :</b>	Mouse IgG1
<b>Immunogen Information :</b>	Synthesized peptide (C-terminal cytoplasmic part of STIM1).

#### Description

STIM1 (stromal interacting molecule; also known as GOK) acts as a sensor of calcium depletion within the endoplasmic reticulum and transduces the signal to Orai1, the presumptive CRAC channel at the plasma membrane. Following decrease of luminal calcium concentration, STIM1 oligomerizes and induces Orai1 to enable entry of extracellular calcium into the cytoplasm. However, the precise mechanism of STIM1-Orai1 interaction has not been elucidated yet. Many questions also remain to be solved around STIM1 functional distribution. It turns out that STIM1 associates with growing ends of microtubules and is involved in endoplasmic reticulum tubule extension.

#### Product Info

<b>Amount :</b>	0.1 mg
<b>Purification :</b>	Purified by protein-A affinity chromatography
<b>Storage condition :</b>	Store at 2-8°C. Do not freeze.

#### Application Note

**Immunoprecipitation Western Blotting** *Recommended dilution: 1 Åµg/ml*  
*Positive control: RBL rat basophilic leukemia cell line*

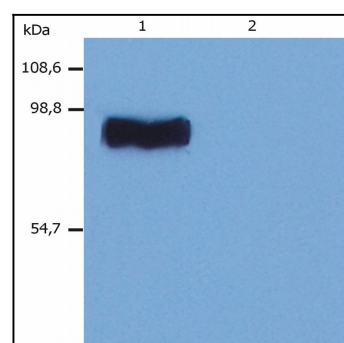


Figure 1: Western Blotting analysis (non-reducing conditions) of whole cell lysate of RBL rat basophilic leukemia cell line. Lane 1: immunostaining with anti-STIM1 (CDN3H4) Lane 2: immunostaining with Isotype mouse IgG1 control (PPV-06; )

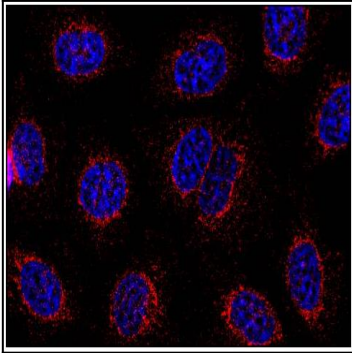


Figure 2: Immunocytochemistry staining of HeLa human cervix carcinoma cell line using anti-STIM1 (CDN3H4; methanol-aceton fixation; detection by Goat anti-mouse IgG1 Alexa Fluor® 598; red). Nuclei were stained with DAPI (blue).