

30-1864: Biotin Conjugated Anti-Prostate-specific antigen (PSA) Monoclonal Antibody (Clone:A67-B/E3)

Clonality :	Monoclonal
Clone Name :	A67-B/E3
Application :	IHC
Reactivity :	Human
Conjugate :	Biotin
Gene :	KLK3
Gene ID :	354
Uniprot ID :	P07288
Alternative Name :	KLK3,APS
Isotype :	Mouse IgG1
Immunogen Information :	30 KDa protein fraction prepared from human seminal plasma

Description

Prostate-specific antigen (PSA) is a protein produced by normal prostate cells. This enzyme participates in the dissolution of the seminal fluid coagulum and plays an important role in fertility. The highest amounts of PSA are found in the seminal fluid; some PSA escapes the prostate and can be found in the serum. This serum component has been used to track the response to therapy in men with prostate cancer. ISOBM TD-3 PSA Workshop code: 207

Product Info

Amount :	0.1 mg
Storage condition :	Store at 2-8°C. Do not freeze.

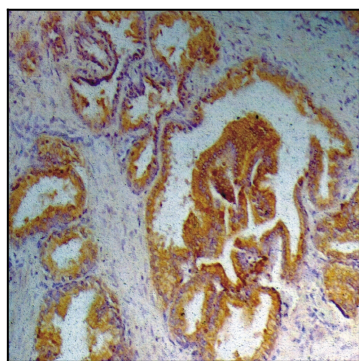


Figure 1: Immunohistochemistry staining of prostate (paraffin-embedded sections) with anti-human Prostate-specific antigen (A67-B/E3).