

30-1179: Anti-Prostate-specific antigen (PSA) Monoclonal Antibody (Clone:A67-B/E3)

| | |
|--------------------------------|--|
| Clonality : | Monoclonal |
| Clone Name : | A67-B/E3 |
| Application : | WB |
| Reactivity : | Human |
| Gene : | KLK3 |
| Gene ID : | 354 |
| Uniprot ID : | P07288 |
| Format : | Purified |
| Alternative Name : | KLK3,APS |
| Isotype : | Mouse IgG1 |
| Immunogen Information : | 30 KDa protein fraction prepared from human seminal plasma |

Description

Prostate-specific antigen (PSA) is a protein produced by normal prostate cells. This enzyme participates in the dissolution of the seminal fluid coagulum and plays an important role in fertility. The highest amounts of PSA are found in the seminal fluid; some PSA escapes the prostate and can be found in the serum. This serum component has been used to track the response to therapy in men with prostate cancer. ISOBM TD-3 PSA Workshop code: 207

Product Info

| | |
|----------------------------|--|
| Amount : | 0.1 mg |
| Purification : | Purified by precipitation and chromatography |
| Storage condition : | Store at 2-8°C. Do not freeze. |

Application Note

Western blotting: Positive material: seminal plasma, reducing conditions, recommended antibody dilution: 2-5 µg/ml.

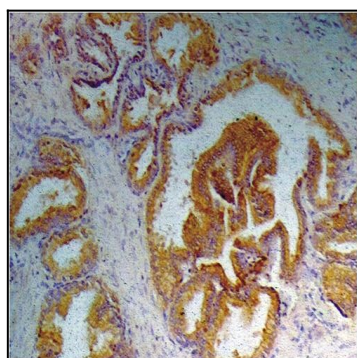


Figure-1: Immunohistochemistry staining of prostate (paraffin-embedded sections) with anti-human Prostate-specific antigen (A67-B/E3).

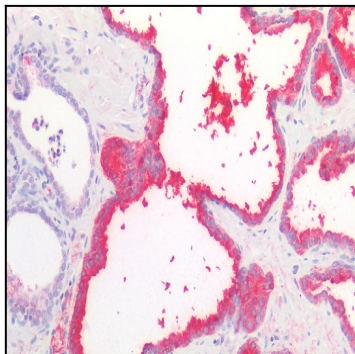


Figure-2: Immunohistochemistry staining of human prostate (paraffin-embedded sections) with anti-PSA (A67-B/E3), 10 μ g/ml.

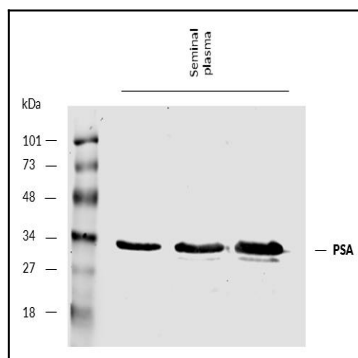


Figure-3: Western blotting analysis of human PSA using mouse monoclonal antibody A67-B/E3 on human seminal plasma under reducing conditions. Nitrocellulose membrane was probed with 5 μ g/ml of mouse anti-PSA monoclonal antibody followed by IRDye800-conjugated anti-mouse secondary antibody. PSA was detected at approximately 30 kDa.