

30-1924: FITC Conjugated Anti-PAC-1 Monoclonal Antibody (Clone:PAC-1)

Clonality :	Monoclonal
Clone Name :	PAC-1
Application :	FACS
Reactivity :	Human
Conjugate :	FITC
Gene :	DUSP2
Gene ID :	1844
Uniprot ID :	Q05923
Alternative Name :	DUSP2,PAC1
Isotype :	Mouse IgM
Immunogen Information :	Human platelets

Description

CD41 (platelet glycoprotein IIb, integrin alpha IIb) is composed of two subunits (120 kDa transmembrane alpha chain and 23 kDa extracellular beta chain) and interacts with CD61 (platelet glycoprotein IIIa, integrin beta 3) in the presence of calcium to form a functional adhesive protein receptor. CD41/CD61 complex is one of the earliest markers of the megakaryocytic lineage. Upon blood vessel damage, this receptor binds to a variety of proteins including von Willebrand factor, fibrinogen, fibronectin and vitronectin, and it is involved in platelet aggregation.

Product Info

Amount :	100 tests
Storage condition :	Store at 2-8°C. Protect from prolonged exposure to light. Do not freeze.

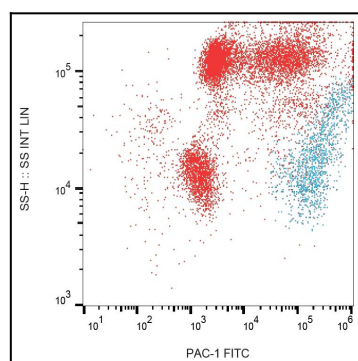


Figure 1: Surface staining of PAC-1 on PHA-activated (1 hour) human peripheral blood with anti-PAC-1 (PAC-1) FITC.