

### 30-1501: Anti-OPAL1 Monoclonal Antibody (Clone:OPAL1-01)

<b>Clonality :</b>	Monoclonal
<b>Clone Name :</b>	OPAL1-01
<b>Application :</b>	FACS
<b>Reactivity :</b>	Human
<b>Gene :</b>	WBP1L
<b>Gene ID :</b>	54838
<b>Uniprot ID :</b>	Q9NX94
<b>Format :</b>	Purified
<b>Alternative Name :</b>	WBP1L,C10orf26,OPA1L
<b>Isotype :</b>	Mouse IgG2a
<b>Immunogen Information :</b>	Recombinant fragment of human OPAL1 (amino acids 152-342)

#### Description

OPAL1 (outcome predictor in acute leukemia 1) is an almost uncharacterized transmembrane adaptor protein expressed mainly by megacaryocytes and platelets. Its expression is enhanced on TEL/AML leukemic cells. The function of OPAL1 is unknown, although the presence of a cytochrome c-like heme-binding site and a transmembrane domain suggested OPAL1 may be involved in the mitochondrial electron transport chain. Its originally reported prognostic impact appears to be treatment dependent.

#### Product Info

<b>Amount :</b>	0.1 mg
<b>Purification :</b>	Purified by protein-A affinity chromatography
<b>Storage condition :</b>	Store at 2-8°C. Do not freeze.

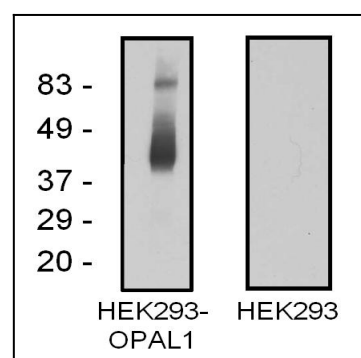


Figure 1: Western blotting analysis of OPAL1 in OPAL1-transfected HEK293 cells using mouse monoclonal antibody OPAL1-01.

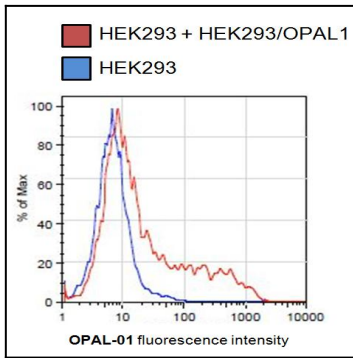


Figure 2: Flow cytometry analysis of OPAL-transfected HEK293 cells using mouse monoclonal antibody OPAL1-01.