

30-2222: PE Conjugated Anti-NTAL / LAB Monoclonal Antibody (Clone:NAP-07)

Clonality :	Monoclonal
Clone Name :	NAP-07
Application :	FACS
Reactivity :	Mouse
Conjugate :	PE
Gene :	LAT2
Gene ID :	7462
Uniprot ID :	Q9GZY6
Alternative Name :	LAT2,LAB,NTAL,WBS15,WBSCR15,WBSCR5,HSPC046
Isotype :	Mouse IgG1
Immunogen Information :	Recombinant cytoplasmic domain (aa 91-243) of human NTAL.

Description

NTAL (Non-T cell activation linker), also known as LAB (Linker for activation of B cells), is a 30 kDa double-palmitoylated transmembrane adaptor protein expressed by B cells, NK cells, mast cells and macrophages. It is a negative regulator of early stages of BCR-dependent B cell signaling and serves as a negative regulator also in mast cells. However, in mast cells, NTAL also contributes to some activation processes, partially overlapping with LAT function.

Product Info

Amount :	0.1 mg
Storage condition :	Store in the dark at 2-8°C. Do not freeze. Avoid prolonged exposure to light.

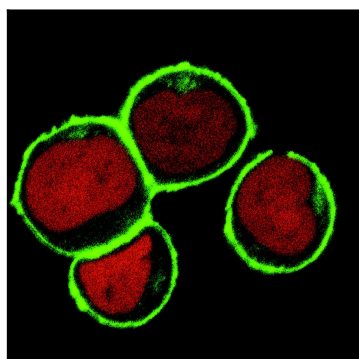


Figure 1: Subcellular localization of NTAL by confocal microscopy in THP-1 human acute monocytic leukemia cell line. THP-1 cells were permeabilized and immunostained using anti-NTAL (NAP-07; green). Nuclei are visualized by propidium iodide (red).