

## 30-1340: Anti-NTAL / LAB Polyclonal Antibody

<b>Clonality :</b>	Polyclonal
<b>Application :</b>	WB
<b>Reactivity :</b>	Mouse
<b>Format :</b>	Purified
<b>Isotype :</b>	Rabbit IgG
<b>Immunogen Information :</b>	Recombinant N-terminal cytoplasmic domain (aa 124-203) of mouse NTAL.

### Description

NTAL (Non-T cell activation linker), also known as LAB (Linker for activation of B cells), is a 30 kDa double-palmitoylated transmembrane adaptor protein expressed by B cells, NK cells, mast cells and macrophages. It is a negative regulator of early stages of BCR-dependent B cell signaling and serves as a negative regulator also in mast cells. However, in mast cells, NTAL also contributes to some activation processes, partially overlapping with LAT function.

### Product Info

<b>Amount :</b>	0.1 mg
<b>Purification :</b>	Purified from rabbit serum by affinity chromatography
<b>Storage condition :</b>	Store at 2-8°C. Do not freeze.

### Application Note

**Western Blotting** Recommended dilution: 1  $\mu$ g/ml  
Positive control: mouse spleen

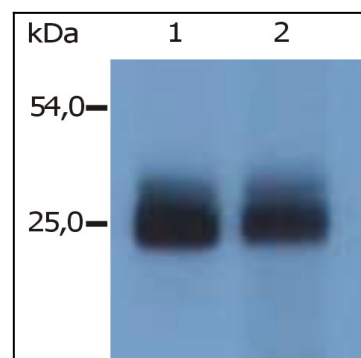


Figure 1: Western Blotting analysis (non-reducing conditions) of mouse NTAL in mouse spleen tissue. Lane 1: immunostaining with polyclonal anti-NTAL antibody (). Lane 2: immunostaining with polyclonal anti-mouse NTAL antibody (specific for N-terminal domain of mouse NTAL)