

30-1339: Anti-NTAL / LAB Polyclonal Antibody(Discontinued)

Clonality :	Polyclonal
Application :	WB, IHC
Reactivity :	Human
Gene :	LAT2
Gene ID :	7462
Uniprot ID :	Q9GZY6
Format :	Purified
Alternative Name :	LAT2,LAB,NTAL,WBS15,WBSCR15,WBSCR5,HSPC046
Isotype :	Rabbit IgG
Immunogen Information :	Recombinant cytoplasmic domain (aa 91-243) of human NTAL.

Description

NTAL (Non-T cell activation linker), also known as LAB (Linker for activation of B cells), is a 30 kDa double-palmitoylated transmembrane adaptor protein expressed by B cells, NK cells, mast cells and macrophages. It is a negative regulator of early stages of BCR-dependent B cell signaling and serves as a negative regulator also in mast cells. However, in mast cells, NTAL also contributes to some activation processes, partially overlapping with LAT function.

Product Info

Amount :	0.1 mg
Purification :	Purified from rabbit serum by affinity chromatography
Storage condition :	Store at 2-8°C. Do not freeze.

Application Note

Western Blotting Recommended dilution: 1 μ g/ml **Immunohistochemistry**

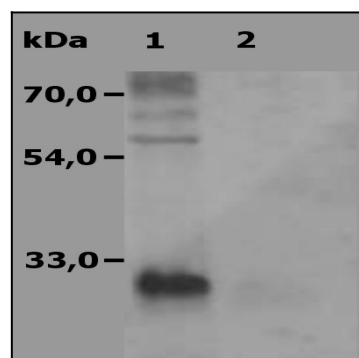


Figure 1: Western Blotting analysis (non-reducing conditions) of NTAL-transfected HEK-293 FT cells using polyclonal anti-human NTAL antibody. Lane 1: cell lysate of transfected HEK-293 FT cells. Lane 2: cell lysate of non-transfected HEK-293 FT cells (negative control)

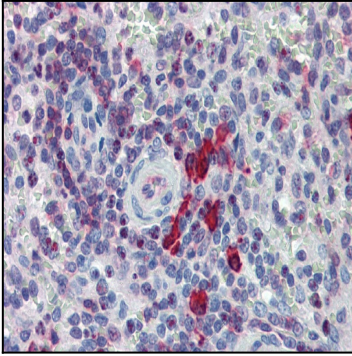


Figure 2: Immunohistochemistry staining of human spleen (paraffin sections) with anti-NTAL polyclonal.