

### 30-1250: Anti-NTAL / LAB Monoclonal Antibody (Clone:NAP-07)

<b>Clonality :</b>	Monoclonal
<b>Clone Name :</b>	NAP-07
<b>Application :</b>	FACS, IP, WB, ICC
<b>Reactivity :</b>	Mouse, Human
<b>Gene :</b>	LAT2
<b>Gene ID :</b>	7462
<b>Uniprot ID :</b>	Q9GZY6
<b>Format :</b>	Purified
<b>Alternative Name :</b>	LAT2,LAB,NTAL,WBS15,WBSCR15,WBSCR5,HSPC046
<b>Isotype :</b>	Mouse IgG1
<b>Immunogen Information :</b>	Recombinant cytoplasmic domain (aa 91-243) of human NTAL.

#### Description

NTAL (Non-T cell activation linker), also known as LAB (Linker for activation of B cells), is a 30 kDa double-palmitoylated transmembrane adaptor protein expressed by B cells, NK cells, mast cells and macrophages. It is a negative regulator of early stages of BCR-dependent B cell signaling and serves as a negative regulator also in mast cells. However, in mast cells, NTAL also contributes to some activation processes, partially overlapping with LAT function.

#### Product Info

<b>Amount :</b>	0.1 mg
<b>Purification :</b>	Purified by protein-A affinity chromatography
<b>Storage condition :</b>	Store at 2-8°C. Do not freeze.

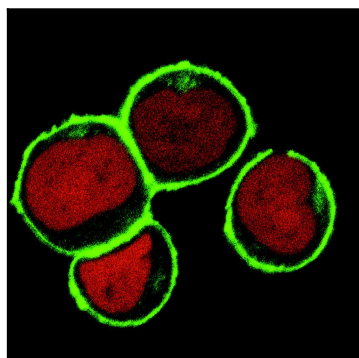


Figure 1: Subcellular localization of NTAL by confocal microscopy in THP-1 human acute monocytic leukemia cell line. THP-1 cells were permeabilized and immunostained using anti-NTAL (NAP-07; green). Nuclei are visualized by propidium iodide (red).