

## 36-1558: Monoclonal Antibody to Progesterone Receptor (Marker of Progesterin Dependence)(Clone : PR500)

<b>Clonality :</b>	Monoclonal
<b>Clone Name :</b>	PR500
<b>Application :</b>	IHC
<b>Reactivity :</b>	Human
<b>Gene :</b>	PGR
<b>Gene ID :</b>	5241
<b>Uniprot ID :</b>	P06401
<b>Format :</b>	Purified
<b>Alternative Name :</b>	PGR,NR3C3
<b>Isotype :</b>	Mouse IgG1, kappa
<b>Immunogen Information :</b>	Recombinant human Progesterone Receptor protein

### Description

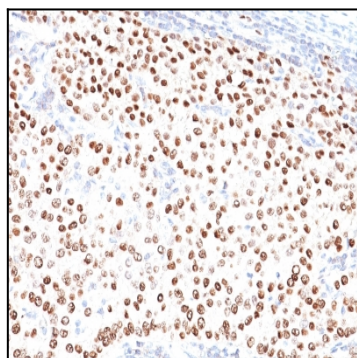
This MAb is specific to progesterone receptor and shows minimal cross-reaction with other members of the family. Progesterone receptor is expressed as two major isoforms, PR-A (81kDa) and PR-B (116kDa). Expression of PgR has been suggested to reflect a intact estrogen regulatory machinery and therefore, predict better clinical response to endocrine therapy than ER alone.

### Product Info

<b>Amount :</b>	100 µg
<b>Purification :</b>	Affinity Chromatography
<b>Content :</b>	100 µg in 500 µl PBS containing 0.05% BSA and 0.05% sodium azide. Sodium azide is highly toxic.
<b>Storage condition :</b>	Store the antibody at 4°C; stable for 6 months. For long-term storage; store at -20°C. Avoid repeated freeze and thaw cycles.

### Application Note

Immunohistochemistry (Formalin-fixed) (1-2ug/ml) (Staining of formalin-fixed tissues requires heating tissue sections in 10mM Tris with 1mM EDTA, pH 9.0, for 45 min at 95&degC followed by cooling at RT for 20 minutes);



Formalin-fixed, paraffin-embedded human Breast Carcinoma stained with progesterone receptor Ab (PR500).