

30-1577: Anti-Lysozyme Monoclonal Antibody (Clone:LZ598-10G9)

Clonality :	Monoclonal
Clone Name :	LZ598-10G9
Application :	FACS, ICC
Reactivity :	Human
Gene :	LYZ
Gene ID :	4069
Uniprot ID :	P61626
Format :	Purified
Alternative Name :	Lysozyme C, 1,4-beta-N-acetylmuramidase C
Isotype :	Mouse IgG1
Immunogen Information :	human lysozyme

Description

Lysozyme is anti-bacterial enzyme found mainly in milk, saliva, tears, plasma, spleen, mucus, and leukocytes (e.g. in cytoplasmic granules of neutrophils). It damages bacterial cell walls by hydrolysis of 1,4-beta-linkages between N-acetylmuramic acid and N-acetyl-D-glucosamine residues in a peptidoglycan and between N-acetyl-D-glucosamine residues in chitodextrins. Lysozyme is part of the innate immune system. It protects wet body surfaces, such as conjunctiva. Reduced lysozyme levels have been associated with bronchopulmonary dysplasia in newborns. On the other hand high lysozyme blood levels produced for example by myelomonocytic leukemia cells can lead to kidney failure and low blood potassium.

Product Info

Amount :	0.1 mg
Purification :	Purified by protein-A affinity chromatography
Storage condition :	Store at 2-8°C. Do not freeze.

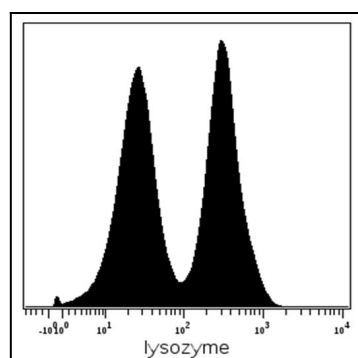


Figure 1: Intracellular staining (mass cytometry) of PBMC after Ficoll-Paque separation with anti-human lysozyme (LZ598-10G9) Gd155. Gated on native.