

### 30-1432: Anti-LIME Monoclonal Antibody (Clone:mLIME-05)

<b>Clonality :</b>	Monoclonal
<b>Clone Name :</b>	mLIME-05
<b>Application :</b>	IP, WB
<b>Reactivity :</b>	Mouse
<b>Format :</b>	Purified
<b>Isotype :</b>	Mouse IgG2a
<b>Immunogen Information :</b>	Recombinant protein corresponding to amino acids 86-202 of mouse LIME

#### Description

LIME (Lck-interacting molecule) is a 30 kDa double-palmitoylated protein with unusually basic cytoplasmic domain, expressed by T cells. After ligation of CD4 or CD8 T cell coreceptors, LIME is phosphorylated by Src-family kinases and associates with Lck and Fyn kinases and with their negative regulator Csk. Interestingly, Csk-mediated phosphorylation of C-terminal negative-regulatory tyrosine of LIME-associated Lck can result in increase of enzymatic activity compared with the total pool of Lck, thus, LIME serves as a positive regulator of TCR-dependent T cell signaling. However, under some circumstances, LIME may mediate inhibitory signals.

#### Product Info

<b>Amount :</b>	0.1 mg
<b>Purification :</b>	Purified by protein-A affinity chromatography
<b>Storage condition :</b>	Store at 2-8°C. Do not freeze.

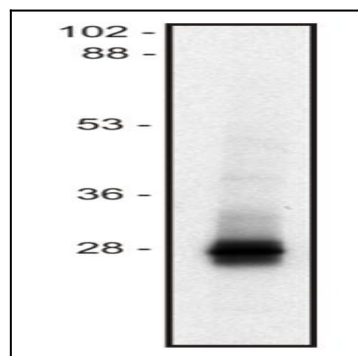


Figure 1: Western blot of mouse thymocyte lysate (1% SDS); non-reduced sample, immunostained by mAb mLIME-05 and goat anti-mouse IgG (H+L)-HRP conjugate.