

30-2021: FITC Conjugated Anti-Lambda light chains Monoclonal Antibody (Clone:4C2)

Clonality :	Monoclonal
Clone Name :	4C2
Application :	FACS
Reactivity :	Human
Conjugate :	FITC
Gene :	IGLC1
Uniprot ID :	P0CG04
Alternative Name :	Ig lambda chain C region MGC, Ig lambda-1 chain C region
Isotype :	Mouse IgG1

Description

Immunoglobulin classes share the same basic four polypeptide chain structure of two heavy chains (five heavy chains types) and two light chains (kappa, lambda; both having a molecular weight of 22.5kDa). Kappa and lambda consist of a variable region and a constant region and can easily be differentiated by the antigenic properties of the constant region. The ratio of kappa to lambda is 70:30.

Product Info

Amount :	100 tests
Storage condition :	Store in the dark at 2-8°C. Do not freeze. Avoid prolonged exposure to light.

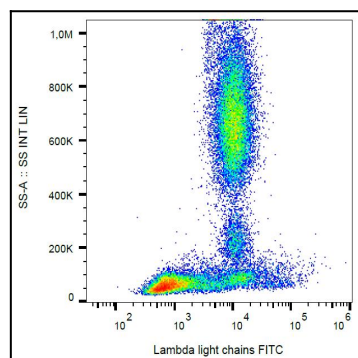


Figure 1: Surface staining of human peripheral blood with anti-human lambda light chain (4C2) FITC.