

30-2020: FITC Conjugated Anti-Kappa light chains Monoclonal Antibody (Clone:A8B5)

Clonality :	Monoclonal
Clone Name :	A8B5
Application :	FACS
Reactivity :	Human
Conjugate :	FITC
Gene :	IGKC
Uniprot ID :	P01834
Alternative Name :	Ig kappa chain C region, Ig kappa chain C region AG, Ig kappa chain C region CUM
Isotype :	Mouse IgG1

Description

Immunoglobulin classes share the same basic four polypeptide chain structure of two heavy chains (five heavy chains types) and two light chains (kappa, lambda; both having a molecular weight of 22.5kDa). Kappa and lambda consist of a variable region and a constant region and can easily be differentiated by the antigenic properties of the constant region. The ratio of kappa to lambda is 70:30.

Product Info

Amount :	100 tests
Storage condition :	Store in the dark at 2-8°C. Do not freeze. Avoid prolonged exposure to light.

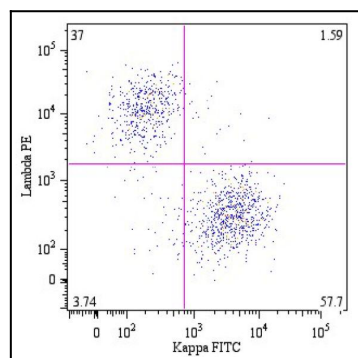


Figure 1: B lymphocytes (CD19+) in a dot-plot Lambda PE vs. Kappa FITC. Kappa light chain detected by A8B5 antibody and lambda light chain by 4C2 antibody, CD19 by LT19 antibody.