

30-1148: Anti-Kappa light chains Monoclonal Antibody (Clone:MEM-09)

Clonality :	Monoclonal
Clone Name :	MEM-09
Application :	FACS
Reactivity :	Human
Gene :	IGKC
Uniprot ID :	P01834
Format :	Purified
Alternative Name :	Ig kappa chain C region, Ig kappa chain C region AG, Ig kappa chain C region CUM
Isotype :	Mouse IgG1
Immunogen Information :	Crude thymus membrane fraction.

Description

Immunoglobulin classes share the same basic four polypeptide chain structure of two heavy chains (five heavy chains types) and two light chains (kappa, lambda; both having a molecular weight of 22.5kDa). Kappa and lambda consist of a variable region and a constant region and can easily be differentiated by the antigenic properties of the constant region. The ratio of kappa to lambda is 70:30.

Product Info

Amount :	0.1 mg
Purification :	Purified by protein-A affinity chromatography
Storage condition :	Store at 2-8°C. Do not freeze.

Application Note

Flow cytometry: Recommended dilution: 1-5 µg/ml.

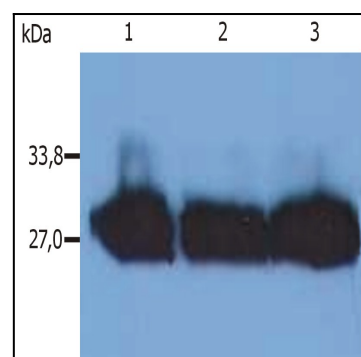


Figure 1: Western Blotting analysis (reducing conditions) of human blood sera using anti-human Immunoglobulin kappa-chain (MEM-09). . Lane 1-3: Human blood serum of different healthy donors