

30-1984: FITC Conjugated Anti-IgM Monoclonal Antibody (Clone:CH2)

Clonality :	Monoclonal
Clone Name :	CH2
Application :	FACS
Reactivity :	Human
Conjugate :	FITC
Gene :	IGHM
Uniprot ID :	P01871
Alternative Name :	Immunoglobulin heavy constant mu
Isotype :	Mouse IgG1
Immunogen Information :	Purified human IgM.

Description

Immunoglobulin M (IgM) is produced as a 900 kDa pentamer, which is an efficient complement binder. This antibody type is produced initially in the immune response and it is the first immunoglobulin class to be synthesized by a fetus or newborn. IgM antibodies do not cross the placenta. IgM concentration in blood is 0.12 g/l and its biological survival (plasma T1/2) is 5 days.

Product Info

Amount :	0.1 mg
Storage condition :	Store in the dark at 2-8°C. Do not freeze. Avoid prolonged exposure to light.

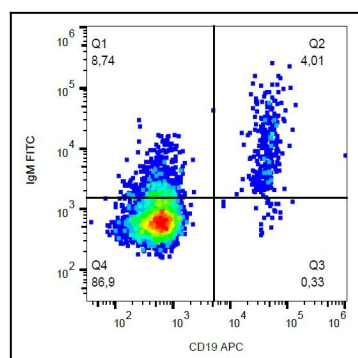


Figure 1: Surface staining of human peripheral blood cells with anti-human IgM (CH2) FITC.