

30-1289: Anti-IgG light chain (bovine) Monoclonal Antibody (Clone:IVA285-1)

Clonality :	Monoclonal
Clone Name :	IVA285-1
Application :	WB, FACS, IHC-Fr
Reactivity :	Bovine, Sheep
Format :	Purified
Isotype :	Mouse IgG1
Immunogen Information :	Fraction of Bovine immunoglobulin.

Product Info

Amount :	0.1 mg
Purification :	Purified by protein-A affinity chromatography
Storage condition :	Store at 2-8°C. Do not freeze.

Application Note

Western Blotting *Recommended dilution:* 0,5-1 Åµg/ml

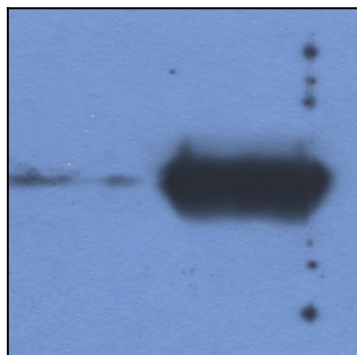


Figure 1: Detection of IgG light chain in reduced samples of Fetal Calf Serum (left lane) and Bovine Serum (right lane) by antibody IVA285-1. This antibody is a suitable tool for in-house quality controls of Fetal Calf Serum (Hybridoma Cell Culture grade).