

30-2030: FITC Conjugated Anti-IgG (Fc) Monoclonal Antibody (Clone:EM-07)

Clonality :	Monoclonal
Clone Name :	EM-07
Application :	WB
Reactivity :	Human
Conjugate :	FITC
Gene :	FCGRT
Gene ID :	2217
Uniprot ID :	P55899
Alternative Name :	FCGRT, FCRN
Isotype :	Mouse IgG1
Immunogen Information :	Fusion protein of human IgG Fc fragment.

Description

Immunoglobulin G (IgG) is a 150 kDa soluble protein that serves as a major effector molecule of the humoral immune response in man. Its concentration in blood plasma of healthy individuals is approximately 10 g/l, which accounts for about 75% of the total plasma immunoglobulins. IgG has the highest stability of blood immunoglobulins (T1/2 = 21 days) and is able of placental transfer. IgG is secreted by plasma cells at a comparably high rate as other immunoglobulins.

Product Info

Amount :	0.1 mg
Storage condition :	Store in the dark at 2-8°C. Do not freeze. Avoid prolonged exposure to light.

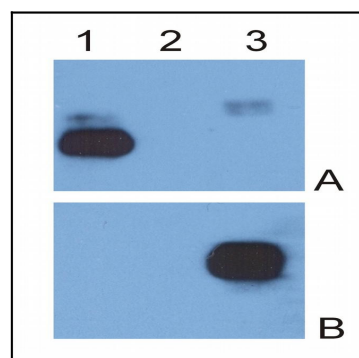


Figure 1: IgG kappa light chain (1), IgG lambda light chain (2) and IgG Fc fragment (3) purified from human serum were analysed by Western blotting with MEM-09 antibody against IgG kappa light chain (A) and EM-07 antibody against IgG Fc fragment (B).