

30-2207: PE Conjugated Anti-IgE Monoclonal Antibody (Clone:BE5)

Clonality :	Monoclonal
Clone Name :	BE5
Application :	FACS
Reactivity :	Human
Conjugate :	PE
Gene :	IGHE
Uniprot ID :	P01854
Alternative Name :	Immunoglobulin heavy constant epsilon
Isotype :	Mouse IgG1
Immunogen Information :	Purified human IgE.

Description

Immunoglobulin E (IgE) is a 180 kDa soluble protein serving as an antigen-specific unit of mast cell effector mechanisms. IgE has the lowest serum concentration of all immunoglobulins (approximately 0.5 mg/l) in healthy individuals, but upon allergen challenge its concentration in blood increases dramatically. Although biological survival of free IgE is very short ($T_{1/2} = 2$ days), it is stabilized after binding to its high affinity receptor. Unlike IgM- IgG- and IgA-committed B cells, IgE-switched B cells do not undergo clonal expansion.

Product Info

Amount :	0.1 mg
Content :	Stabilizing phosphate buffered saline (PBS), pH 7.4, 15 mM sodium azide
Storage condition :	Store in the dark at 2-8°C. Do not freeze. Avoid prolonged exposure to light.

Application Note

Flow cytometry: Recommended dilution: 2-5 $\mu\text{g/ml}$.

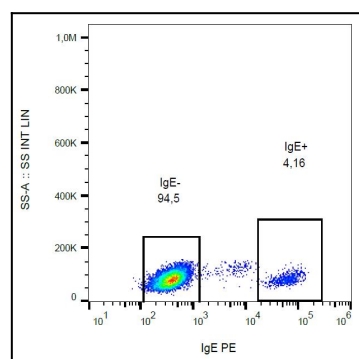


Figure 1: Surface staining of IgE in human peripheral blood with anti-IgE (BE5) PE.