

30-1208: Anti-IgE Monoclonal Antibody (Clone:4G7.325)

Clonality :	Monoclonal
Clone Name :	4G7.325
Application :	ELISA,FACS
Reactivity :	Human
Conjugate :	Unconjugated
Gene :	IGHE
Uniprot ID :	P01854
Format :	Purified
Alternative Name :	Immunoglobulin heavy constant epsilon
Isotype :	Mouse IgG
Immunogen Information :	Purified human IgE.

Description

Immunoglobulin E (IgE) is a 180 kDa soluble protein serving as an antigen-specific unit of mast cell effector mechanisms. IgE has the lowest serum concentration of all immunoglobulins (approximately 0.5 mg/l) in healthy individuals, but upon allergen challenge its concentration in blood increases dramatically. Although biological survival of free IgE is very short ($T_{1/2} = 2$ days), it is stabilized after binding to its high affinity receptor. Unlike IgM- IgG- and IgA-committed B cells, IgE-switched B cells do not undergo clonal expansion.

Product Info

Amount :	0.1 mg
Purification :	Purified by precipitation and chromatography
Content :	1mg/ml, Phosphate buffered saline (PBS), pH 7.4, 15 mM sodium azide
Storage condition :	Store at 2-8°C. Do not freeze.

Application Note

Flow cytometry: Recommended dilution: 1-4 μ g/ml.

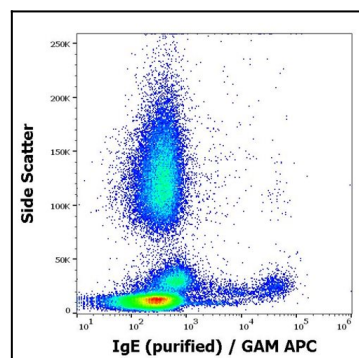


Figure 1: Flow cytometry surface staining pattern of human peripheral whole blood stained using anti-human IgE (4G7.325) purified antibody (concentration in sample 0,6 $\frac{1}{4}$ g/ml, GAM APC).

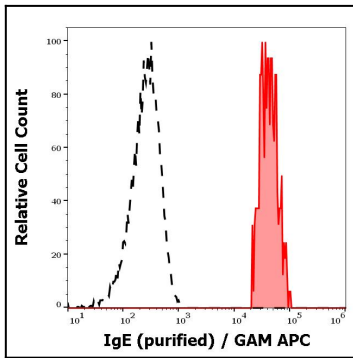


Figure 2: Separation of human IgE positive basophil granulocytes (red-filled) from neutrophil granulocytes (black-dashed) in flow cytometry analysis (surface staining) of peripheral whole blood stained using anti-human IgE (4G7.325) purified antibody (concentration in sample 0,6 µg/ml, GAM APC).