

30-1986: FITC Conjugated Anti-IgE Monoclonal Antibody (Clone:4H10)

Clonality :	Monoclonal
Clone Name :	4H10
Application :	FACS
Reactivity :	Human
Conjugate :	FITC
Gene :	IGHE
Uniprot ID :	P01854
Alternative Name :	Immunoglobulin heavy constant epsilon
Isotype :	Mouse IgG1
Immunogen Information :	Purified human IgE.

Description

Immunoglobulin E (IgE) is a 180 kDa soluble protein serving as an antigen-specific unit of mast cell effector mechanisms. IgE has the lowest serum concentration of all immunoglobulins (approximately 0.5 mg/l) in healthy individuals, but upon allergen challenge its concentration in blood increases dramatically. Although biological survival of free IgE is very short ($T_{1/2} = 2$ days), it is stabilized after binding to its high affinity receptor. Unlike IgM- IgG- and IgA-committed B cells, IgE-switched B cells do not undergo clonal expansion.

Product Info

Amount :	0.1 mg
Content :	0.1mg/ml, Stabilizing phosphate buffered saline (PBS), pH 7.4, 15 mM sodium azide
Storage condition :	Store in the dark at 2-8°C. Do not freeze. Avoid prolonged exposure to light.

Application Note

Flow cytometry: Recommended dilution: 4 μ g/ml.

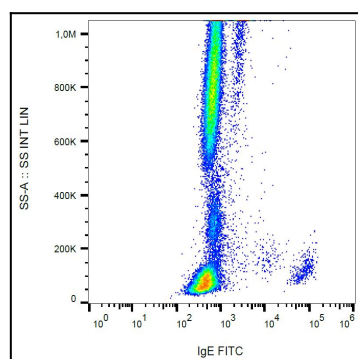


Figure 1: Surface staining of IgE on human peripheral blood cells with anti-IgE (4H10) FITC.