

30-1985: FITC Conjugated Anti-IgE Monoclonal Antibody (Clone:BE5)

Clonality :	Monoclonal
Clone Name :	BE5
Application :	FACS
Reactivity :	Human
Conjugate :	FITC
Gene :	IGHE
Uniprot ID :	P01854
Alternative Name :	Immunoglobulin heavy constant epsilon
Isotype :	Mouse IgG1
Immunogen Information :	Purified human IgE.

Description

Immunoglobulin E (IgE) is a 180 kDa soluble protein serving as an antigen-specific unit of mast cell effector mechanisms. IgE has the lowest serum concentration of all immunoglobulins (approximately 0.5 mg/l) in healthy individuals, but upon allergen challenge its concentration in blood increases dramatically. Although biological survival of free IgE is very short ($T_{1/2} = 2$ days), it is stabilized after binding to its high affinity receptor. Unlike IgM- IgG- and IgA-committed B cells, IgE-switched B cells do not undergo clonal expansion.

Product Info

Amount :	0.1 mg
Content :	0.1 mg/ml, Stabilizing phosphate buffered saline (PBS), pH 7.4, 15 mM sodium azide
Storage condition :	Store in the dark at 2-8°C. Do not freeze. Avoid prolonged exposure to light.

Application Note

Flow cytometry: Recommended dilution: 5 µg/ml.

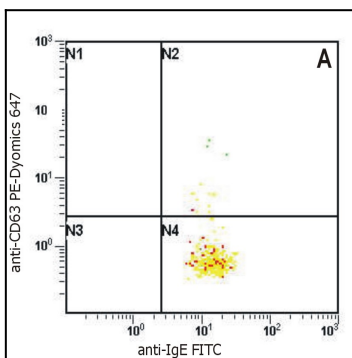


Figure 1: Flow Cytometry analysis of basophil activation upon stimulation of normal (heparin-treated) whole blood with combination of IL-3 and Goat anti-IgE polyclonal antibody. Combination of anti-human IgE (BE5) FITC and anti-human CD63 (MEM-259) PE-Dyomics 647) was used (analysis in basophil window). Fig. 1A - staining of non-stimulated (control) sample Fig. 1B - staining of IgE stimulated sample