

30-1213: Anti-HSV1 + HSV2 (gB) Monoclonal Antibody (Clone:T111)

Clonality :	Monoclonal
Clone Name :	T111
Application :	ICC, ELISA
Reactivity :	HSV
Format :	Purified
Isotype :	Mouse IgG2b
Immunogen Information :	Extract of HSV-1 infected VERO (green monkey kidney) cells.

Description

Herpes Simplex Virus (HSV) is a virus that manifests itself in two common viral infections. There are actually two types of Herpes Simplex Virus, HSV1 and HSV2. These are very similar in many ways, and both can cause either oral herpes or genital herpes. HSV1 - most commonly develops into Oral Herpes infecting the lips (fever blisters or cold sores). HSV1 can also infect the genital area causing sores to develop. HSV2 - generally infects the genital area (Genital Herpes); however, HSV2 can also infect the mouth.

Product Info

Amount :	0.1 mg
Purification :	Purified by protein-A affinity chromatography
Storage condition :	Store at 2-8°C. Do not freeze.

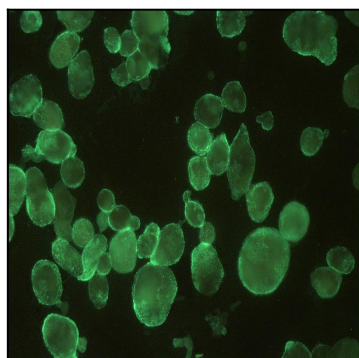


Figure-1: Detection of HSV by monoclonal antibody T111 in infected cells.