

### 30-1347: Anti-HLA-G Monoclonal Antibody (Clone:G233)

|                                |   |
|--------------------------------|---|
| <b>Clonality :</b>             | Monoclonal  |
| <b>Clone Name :</b>            | G233  |
| <b>Application :</b>           | IP,ELISA,IHC,FACS   |
| <b>Reactivity :</b>            | Human   |
| <b>Gene :</b>                  | HLA-G   |
| <b>Gene ID :</b>               | 3135  |
| <b>Uniprot ID :</b>            | P17693  |
| <b>Format :</b>                | Purified  |
| <b>Alternative Name :</b>      | HLA-G,HLA-6.0,HLAG  |
| <b>Isotype :</b>               | Mouse IgG2a   |
| <b>Immunogen Information :</b> | HLA-A2.1/human beta2-microglobulin double transgenic mice were immunized with murine L cells transfected with both human beta2-microglobulin and HLA-G. |

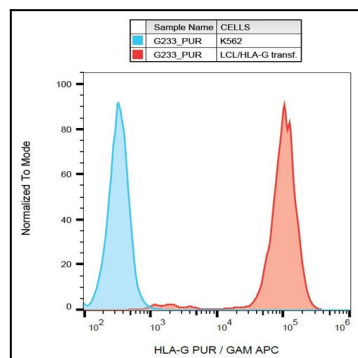
#### Product Info

|                            |   |
|----------------------------|---|
| <b>Amount :</b>            | 0.1 mg  |
| <b>Purification :</b>      | Purified by protein-A affinity chromatography |
| <b>Storage condition :</b> | Store at 2-8°C. Do not freeze.                |

#### Application Note

**Flow Cytometry** *Recommended dilution:5-10 µg/ml*

**Immunoprecipitation ELISA**



Flow cytometry analysis (surface staining) of HLA-G in HLA-G transfectants using anti-HLA-G (G233) purified / GAM-APC.