

### 30-1865: Biotin Conjugated Anti-HLA-G Monoclonal Antibody (Clone:MEM-G/1)

<b>Clonality :</b>	Monoclonal
<b>Clone Name :</b>	MEM-G/1
<b>Application :</b>	WB
<b>Reactivity :</b>	Human
<b>Conjugate :</b>	Biotin
<b>Gene :</b>	HLA-G
<b>Gene ID :</b>	3135
<b>Uniprot ID :</b>	P17693
<b>Alternative Name :</b>	HLA-G,HLA-6.0,HLAG
<b>Isotype :</b>	Mouse IgG1
<b>Immunogen Information :</b>	Denatured bacterially expressed recombinant human HLA-G heavy chain.

#### Product Info

<b>Amount :</b>	0.1 mg
<b>Storage condition :</b>	Store at 2-8°C. Do not freeze.

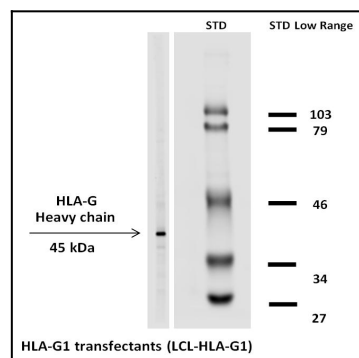


Figure 1: Western blotting analysis (reducing conditions) of HLA-G1 in HLA-G1 transfectants using the antibody MEM-G/1 biotin.