

### 30-1300: Anti-HLA-DR1 (empty) Monoclonal Antibody (Clone:MEM-267)

<b>Clonality :</b>	Monoclonal
<b>Clone Name :</b>	MEM-267
<b>Application :</b>	WB, FACS, ELISA
<b>Reactivity :</b>	Human
<b>Gene :</b>	HLA-DRB1
<b>Gene ID :</b>	3123
<b>Uniprot ID :</b>	P04229
<b>Format :</b>	Purified
<b>Alternative Name :</b>	HLA-DRB1
<b>Isotype :</b>	Mouse IgG2b
<b>Immunogen Information :</b>	Purified, insoluble DR1 beta chain (DRB1*0101) expressed in E. coli inclusion bodies.

#### Description

HLA-DR1 belongs to the HLA class II beta chain paralogues. The MHC Class II molecule is a heterodimer consisting of an alpha (DRA) and a beta chain (DRB), both anchored in the membrane. It plays a central role in the immune system by presenting peptides derived from extracellular proteins. MHC Class II molecules are expressed in antigen presenting cells (APC). The beta chain is approximately 26-28 kDa. Within the DR molecule the beta chain contains all the polymorphisms specifying the peptide binding specificities. Hundreds of DRB1 alleles have been described and typing for these polymorphisms is routinely done for bone marrow and kidney transplantation.

#### Product Info

<b>Amount :</b>	0.1 mg
<b>Purification :</b>	Purified by protein-A affinity chromatography
<b>Storage condition :</b>	Store at 2-8°C. Do not freeze.

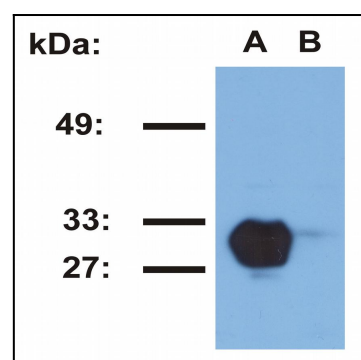


Figure 1: Western blotting analysis of HLA-DR1 in Raji (A) and Jurkat (B) cell lines using MEM-267 antibody.