

### 30-2184: PE Conjugated, Anti-HLA-DR+DP Monoclonal Antibody (Clone:HL-38)

<b>Clonality :</b>	Monoclonal
<b>Clone Name :</b>	HL-38
<b>Application :</b>	FACS
<b>Reactivity :</b>	Human
<b>Conjugate :</b>	PE
<b>Gene :</b>	HLA-DPA1
<b>Gene ID :</b>	3113
<b>Uniprot ID :</b>	P20036
<b>Alternative Name :</b>	HLA-DPA1,HLA-DP1A,HLASB
<b>Isotype :</b>	Mouse IgG2a
<b>Immunogen Information :</b>	Raji Burkitt's lymphoma cell line

#### Product Info

<b>Amount :</b>	100 tests
<b>Storage condition :</b>	Store in the dark at 2-8°C. Do not freeze. Avoid prolonged exposure to light.

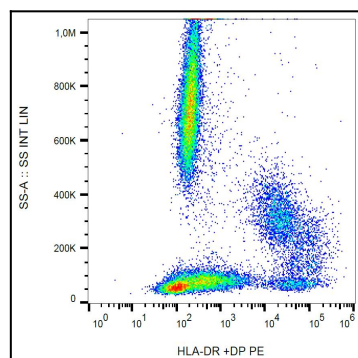


Figure 1: Surface staining of human peripheral blood with anti-HLA-DR+DP (HL-38) PE.