

### 30-1144: Anti-HLA-DR+DP Monoclonal Antibody (Clone:HL-40)

<b>Clonality :</b>	Monoclonal
<b>Clone Name :</b>	HL-40
<b>Application :</b>	FACS
<b>Reactivity :</b>	Human
<b>Gene :</b>	HLA-DPA1
<b>Gene ID :</b>	3113
<b>Uniprot ID :</b>	P20036
<b>Format :</b>	Purified
<b>Alternative Name :</b>	HLA-DPA1,HLA-DP1A,HLASB
<b>Isotype :</b>	Mouse IgG2a
<b>Immunogen Information :</b>	Raji Burkitt's lymphoma cell line

#### Product Info

<b>Amount :</b>	0.1 mg
<b>Purification :</b>	Purified by protein-A affinity chromatography
<b>Storage condition :</b>	Store at 2-8°C. Do not freeze.

#### Application Note

Flow cytometry: Recommended dilution: 1-5 µg/ml.

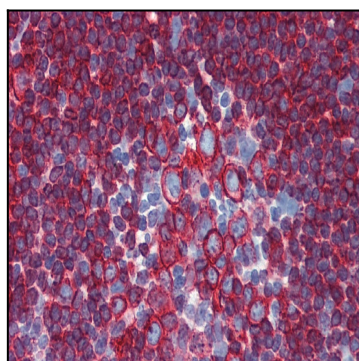


Figure 1: Immunohistochemistry staining of human small intestine (paraffin-embedded sections) with anti-HLA-DR+DP (HL-40).